

CALABANGA WATER DISTRICT

SAN ANTONIO, CALABANGA, CAMARINES SUR



2014 ANNUAL REPORT

TABLE OF CONTENTS

FOREWORD

VISION, MISSION AND CORE VALUES

I. GENERAL

- A. ADMINISTRATIVE
- B. FINANCIAL/COMMERCIAL
- C. TECHNICAL
- D. OPERATIONAL

II. PROFILE

- A. THE WATER DISTRICT AND ITS PHYSICAL SYSTEMS FACILITIES
 - 1. ORGANIZATION
 - 2. EXISTING SYSTEM FACILITIES
- B. CURRENT OPERATIONAL/FINANCIAL HIGHLIGHTS
 - 1. EXISTING WATER RATES
 - 2. OPERATING INCOME / EXPENSES
 - 3. FINANCIAL HIGHLIGHTS
- C. COMMUNITY ECONOMIC PROFILE
 - 1. TOTAL POPULATION
 - 2. AVERAGE MONTHLY INCOME
 - 3. MAJOR SOURCE OF INCOME
 - 4. AVERAGE MONTHLY EXPENDITURES
 - 5. MUNICIPALITY / CITY REVENUE
 - 6. AVERAGE RATE OF MORTALITY (WATER BORNE DISEASE)
 - 7. AVERAGE RATE OF MORBIDITY (WATER BORNE DISEASE)
 - 8. MAJOR AGRICULTURAL, INDUSTRIAL AND COMMERCIAL ACTIVITIES
- D. OTHER INFORMATION

III. ANNEXES

- A. FUNCTIONAL CHART
- B. ORGANIZATIONAL CHART
- C. LIST OF PLANTILLA OF PERSONNEL
- D. SUMMARY OF POLICY SETTING RESOLUTIONS
- E. LIST OF REPORTS PREPARED REGULARLY
- F. FINANCIAL STATEMENTS
 - 1. BALANCE SHEET

2. STATEMENT OF INCOME
 3. COMPOSITION OF CASH AND CASH IN BANK
 4. STATEMENT OF CHANGES IN EQUITY
 5. CASH FLOW STATEMENT
 6. TRIAL BALANCE
 7. COMPARATIVE BALANCE SHEET (2013-14)
 8. COMPARATIVE INCOME STATEMENT (2013-14)
 9. COMPARATIVE CASH FLOW STATEMENT (2013-14)
 10. COMPARATIVE STATEMENT OF CHANGES IN EQUITY (2013-14)
 11. NOTES TO FINANCIAL STATEMENTS
- G. SUMMARY
 - H. WATER RATES
 - I. SUMMARY OF WATER PRODUCTION AND CONSUMPTION
 - J. WD WATER SOURCES
 - K. SERVICE CONNECTION GROWTH
 - L. LIST OF MAJOR EQUIPMENTS
 - M. SUMMARY OF BACTERIOLOGICAL ANALYSIS
 - N. MONTHLY DATA SHEET

VISION

The Service Provider of sufficient, potable and affordable water supply through establishing watersheds in sustainable manner towards the development of Calabanga.

MISSION

To be an effective stakeholder in the development of living condition and economic productivity of the people of Calabanga by providing sufficient, potable and affordable water supply and fulfilling concessionaire's satisfaction by being a viable, effective and self-reliant water district.

GOALS

1. To provide sufficient, potable and affordable water supply at all time.
2. To conserve, protect and rehabilitate the watershed areas towards a better environment.
3. To promote customer's full satisfaction and maintain high standard of public service.
4. To maintain the highest degree of employees morale through effective management.
5. To be a sustainable and self-reliant water district.

I. GENERAL

Calabanga Water District (CAWADI) is a Government Owned and Controlled Corporation that operates on the powers and authority conferred to it by Presidential Decree No. 198, otherwise known as the Provincial Water Utilities Act of 1973, as amended by PD 768 and PD 1979. Its Conditional Certificate of Conformance (CCC) No. 314 was issued by the Local Water Utilities Administration (LWUA) on October 19, 1987. It is categorized as “Category C” effective March 2012 on the basis of 2011 LWD MACRO.

Calabanga Water District principal business address is at San Antonio, Calabanga, Camarines Sur. A satellite collection center is partnered with KABACAS Multi-purpose Cooperative to provide water bill collection services to concessionaires in the east coast of Calabanga.

Calabanga Water District is under the managerial supervision of Engr. Celedonio I. Tolentino, Jr., the General Manager. Supporting him are three divisions, to wit: (1) Administrative/General Services Division headed by Ms. Betty B. Viola (2) Finance and Commercial Services headed by Ms. Diana B. Batalla and Ms. Raquel M. Saavedra respectively, and (3) Engineering/Construction/Production Division headed by Engr. Michael M. Gutierrez.

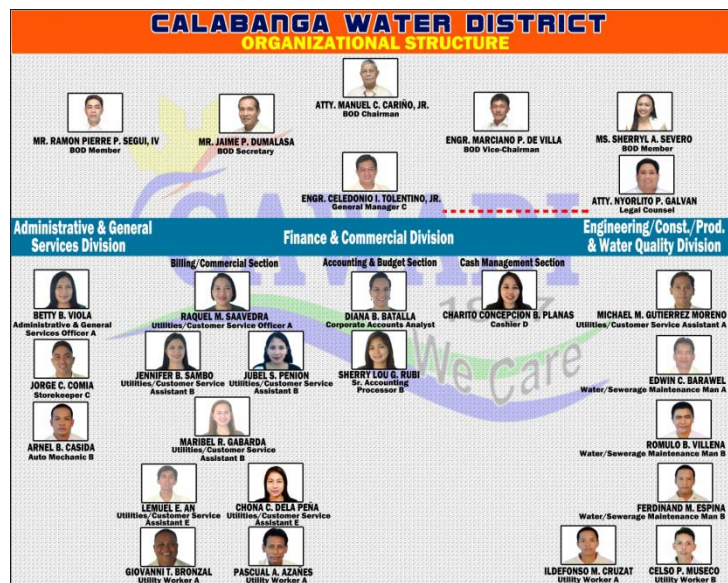
The policy making body of the Calabanga Water District is composed of six members of the Board of Directors enumerated as follows:

Name	Position	Sector	Term of office
Atty. Manuel C. Cariño, Jr.	Chairman	Education	01.01.13-12.31.18
Engr. Marciano P. de Villa	Vice-Chairman	Professional	01.01.11-12.31.16
Mr. Jaime P. Dumalasa	Secretary	Civic	01.01.15-12.31.20
Mr. Ramon Pierre P. Segui IV	Member	Business	01.01.15-12.31-20
Ms. Sherryl A. Severo, MBA	Member	Women	01.01.13-12.31.18
Engr. Ajerco C. Comia	6 th Member	LWUA	07.01.13-06.30.14

II. PROFILE

A. THE WATER DISTRICT AND ITS PHYSICAL SYSTEMS FACILITIES

1. ORGANIZATION



2. EXISTING SYSTEM FACILITIES

WATER FACILITIES

(1)Mt. Canibag Reservoir- It is located at Paolbo- Belen and was constructed in 1982 with a capacity of 200 cum.

(2)Fabrica Reservoir and Water Treatment Facility- Located at Barangay Fabrica and was constructed and inaugurated on May 2014 with a capacity of 500 cum. The water treatment facility is designed to filter manganese and other elements that may be present in the water being pumped from Fabrica Pumping Station.

B. CURRENT OPERATIONAL/FINANCIAL HIGHLIGHT

1. WATER RATES

CLASSIFICATION	SIZE	MINIMUM CHARGE	COMMODITY CHARGE			
			11-20	21-30	31-40	41-UP
Residential/Government	1/2"	236.00	24.60	26.10	28.10	30.60
	3/4"	342.40	24.70	26.20	28.20	30.70
	1"	684.00	24.70	26.20	28.20	30.70
Commercial/Industrial	1/2"	472.00	49.20	52.20	56.20	61.20
	3/4"	684.00	49.20	52.20	56.20	61.20
	1"	1,369.60	49.20	52.20	56.20	61.20
Commercial A	1/2"	413.00	43.05	45.68	49.18	53.55
Commercial B	1/2"	354.00	36.90	39.15	42.15	45.90
Commercial C	1/2"	295.00	30.75	32.63	35.13	38.25
Bulk Sale		12.00				

2. OPERATING INCOME AND EXPENSES

CALABANGA WATER DISTRICT

STATEMENT OF INCOME AND EXPENSES

For the Period Ending December 31, 2014

INCOME

Income from Waterworks/Irrigation Systems	32,611,511.69
Other Business Income	1,751,574.08
Fines & Penalties - Business Income	1,491,037.08
Income From Bid Docs	-
Income from Grants and Donations	-

GROSS INCOME 35,854,122.85

LESS: EXPENSES

PERSONAL SERVICES

Salaries & Wages - Regular	5,005,349.53
Salaries & Wages - Contractual	1,477,671.65
Salaries & Wages - Emergency	91,942.15
Personnel Economic Relief Allowance (PERA)	418,000.00
Additional Compensation (ADCOM)	-
Representation Allowance (RA)	102,000.00
Transportation Allowance (TA)	102,000.00
Clothing/Uniform Allowance	90,000.00
Productivity Incentive Allowance	-
Other Bonuses & Allowances	85,000.00
Honoraria	16,000.00
Longevity Pay	-
Overtime & Night Pay	57,457.54
Cash Gift	85,000.00
Year End Bonus	316,857.00
Monetized Leave Credits	338,326.50
Life Insurance Contributions	467,136.60
PAG-IBIG Contributions	21,100.00
PHILHEALTH Contributions	43,825.00
ECC Contributions	20,980.00
Terminal Leave Benefits	-
Other Personnel Benefits	38,510.00

TOTAL PERSONAL SERVICES 8,777,155.97

MAINTENANCE & OTHER OPERATING EXPENSES

Traveling Expenses - Local	160,774.87
Training Expenses	211,761.73
Office Supplies Expenses	212,380.81
Accountable Forms Expenses	60,643.69
Chemicals & Filtering Materials Expenses	350,452.50
Gasoline, Oil & Lubricants Expenses	1,296,413.39
Other Supplies Expenses	22,107.25
Water Expenses	16,035.05
Electricity Expenses	597,452.74
Postage & Deliveries	8,934.00
Telephone Expenses - Landline	27,561.96

Telephone Expenses - Mobile	85,578.14
Internet Expenses	57,576.00
Cable, Satellite, Telegraph & Radio Expenses	2,975.00
Membership Dues & Contributions to Organizations	23,744.00
Advertising Expenses	5,000.00
Printing & Binding Expenses	49,179.20
Rent Expenses	124,698.84
Representation Expenses	51,635.95
Transportation & Delivery Expenses	20,983.90
Subscription Expenses	5,800.00
Rewards & Other Claims	-
Purchased Water	53,727.60
Legal Services	97,000.00
Auditing Services	-
Consultancy Services	52,533.64
Janitorial Services	144,311.83
Security Services	379,882.28
Other Professional Services	9,117.00
Council/Board Members Allowances & Other Benefits	741,777.07
Repairs & Maintenance - Irrigation & Water Systems & Structures	862,339.81
Repairs & Maintenance - Office Building	64,183.13
Repairs & Maintenance - Office Equipment	1,150.00
Repairs & Maintenance - Furnitures & Fixtures	-
Repairs & Maintenance - IT Equipment & Software	16,324.75
Repairs & Maintenance - Machineries	28,015.00
Repairs & Maintenance - Communication Equipment	3,326.50
Repairs & Maintenance - Motor Vehicles	187,295.55
Repairs & Maintenance - Other PPE	50,000.00
Repairs & Maintenance - Roads, Highways and Bridges	-
Repairs & Maintenance - Reservoir and Tanks	553,680.30
Donations	-
Senior Citizen Discount Expenses	41,858.04
Extraordinary Expenses	21,585.50
Miscellaneous Expenses	71,794.89
Taxes, Duties & Licenses	635,654.07
Fidelity Bond Premiums	26,000.96
Insurance Expenses	9,804.65
Bad Debt Expenses	7,213.79
Depreciation - Land Improvements	(21,302.12)
Depreciation - Other Structures	4,453.87
Depreciation - Irrigation & Water Systems & Structures	4,393,837.83
Depreciation - Office Building	283,935.87
Depreciation - Office Equipment	121,536.65
Depreciation - Furniture & Fixtures	106,581.36
Depreciation - IT Equipment & Software	105,701.53
Depreciation - Machineries	2,862.00
Depreciation - Communication Equipment	22,688.59
Depreciation - Firefighting Equipment and Accessories	3,750.00
Depreciation - Laboratory Equipment	19,800.00
Depreciation - Technical & Scientific Equipment	-
Depreciation - Motor Vehicle	110,977.28
Depreciation - Other Transportation Equipment	690.00
Depreciation - Other PPE	604,447.47
Depreciation - IT Software	-

Depreciation - Artesian Well, Reservoir, Pumping Station and Conduits	(1,768,060.44)
Other Maintenance & Operating Expenses	254,344.21
TOTAL MAINT.& OTHER OPERATING EXPENSES	11,696,509.48
FINANCIAL EXPENSES	
Bank Charges	-
Interest Expenses	3,610,188.00
Other Financial Charges	-
TOTAL FINANCIAL EXPENSES	3,610,188.00
TOTAL EXPENSES	24,083,853.45
INCOME (LOSS) FROM OPERATION	11,770,269.40
ADD/DEDUCT: OTHER INCOME/EXPENSES	
Interest Income	5,151.41
NET INCOME (LOSS) BEFORE INCOME TAX	11,775,420.81

3. FINANCIAL HIGHLIGHTS

OTHER PARAMETERS OF EFFICIENCY of the WATER DISTRICT

Based on the Audited Amounts in the Financial Statement and Monthly Data Sheet
CY 2014

Indicators	Standard	Actual	Remarks
<p>II. Financial Efficiency :</p> <p>a. Operating Ratio</p> <p>The ratio of operating and maintenance cost, including depreciation and interest expenses to total revenue of which Total Personal Services cost shall not exceed 35% of 75% .</p>	75%	73%	Favorable. Personal Services cost is 24% of the total revenues.
<p>b. Profit Margin</p> <p>Balance of revenue generated from operation after expenses including depreciation.</p>	25%	33%	Favorable.
<p>c. Acid Test Ratio</p> <p>Acid Test (Cash & AR , net) Ratio is more stringent test of short term liquidity . It is the ratio of Quick Assets over current Liabilities.</p>	.75-2.0	8.084	Favorable.
<p>d. Current Ratio</p> <p>Measures the adequacy of working capital; primary test of solvency to meet current asset as going concern. Ratio of current Assets to Current Liabilities</p>	3:1	9.65:1	Favorable.

<p>II.Operational Efficiency</p> <p>a. Production efficiency</p> <p>Total water metered and passed on to the distribution line as against the system production capacity.</p>	<p>85%</p>	<p>81%</p>	<p>Favorable.</p>
<p>b.Unaccounted Water</p> <p>Difference between the total water produced as against the total water metered / billed to service connections and its percentage to water produced.</p>	<p>35%</p>	<p>18%</p>	<p>Favorable. The District unaccounted water is lower than the allowable loss.</p>
<p>c. Staff Production Index</p> <p>Total to total active service connections equal one (1) staff for every one hundred twenty (120) active service connections.</p>	<p>1:120</p>	<p>1:197</p>	<p>Favorable. The Agency has more than water service connections in proportion to its personnel complement.</p>

COMMUNITY ECONOMIC PROFILE

- TOTAL POPULATION - 78,321
- AVERAGE MONTHLY INCOME-
- MAJOR SOURCE OF INCOME- Farming and Fishing
- AVERAGE MONTHLY EXPENDITURES-
- MUNICIPALITY / CITY REVENUE- P134,972,403.42
- AVERAGE RATE OF MORTALITY (WATER BORNE DISEASE)- 0%
- AVERAGE RATE OF MORBIDITY (WATER BORNE DISEASE)- 0%
- MAJOR AGRICULTURAL, INDUSTRIAL AND COMMERCIAL ACTIVITIES
 - ❖ Rice, Corn and Coconut Crops
 - ❖ Abaca, Coffee, Vegetables, Fruit Trees and Root Crops
 - ❖ Fish, Shell fish, Oysters, Prawns, Shrimps and Other Marine Products
 - ❖ Wholesale and Retail Trade, Transport Business, Drugstores, Agri-supplies, Gasoline Stations
 - ❖ Rice Milling, Fish Processing, Bamboo Craft, Furniture Making, Garments, Metal Crafts, Welding and Auto Repair Shops

Engr. Celedonio I. Tolentino, Jr.
General Manager C

ANNEXES